

5499 EF/EC

Speed turbine meters with
single jet

Technical Data Sheet



Description

The Water meter 5499 EF/EC are individual water meters, whatever they are named (sub-metre, individual, splitting meters), they allow the measure of each individual consumption and accurate invoicing.

- Orientable dry dial
- Pre-equipped with pulse generator, 1l/h standard



5499 EF/EC

Speed turbine meters with single jet

DN	L mm	Q3 MID	Q3/Q1 Ratio	PFA in bar	Ref.	Designation	Weight Kg
15	EF - 110	2,5	R40 R80H	10	149B7284	EF Water meter	0,36
15	EC - 110	2,5	R40 R80H	10	149B7313	EC Water meter	0,36

Technical features

Operating temperature EF	Maxi. 50 °C
Operating temperature EC	Maxi. 90 °C
Permissible operating pressure (PFA) in water	10 bar
Connection	Male/male
Mediums	Water

Approvals

ACS

International construction Standards :

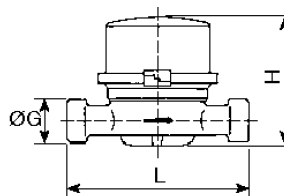
All our water meters are all marked and are EC approved.

Installation

The connection diameter of the water meter is always over the internal bore of the meter.

Sizing

ØG		L	H
RACC	mm	mm	mm
3/4"	20/27	110	71



5499 EF/EC

The descriptions and photographs contained in this product specification sheet are supplied by way of information only and are not binding.

Socla reserves the right to carry out any technical and design improvements to its products without prior notice. Warranty : All sales and contracts for sale are expressly conditioned on the buyer's assent to Socla terms and conditions found on its website at www.socla.com. Socla hereby objects to any term, different from or additional to Socla terms, contained in any buyer communication in any form, unless agreed to in a writing signed by an officer of Socla.



A WATTS Brand

certified : ISO 9001 version 2015
ISO 18001

Socla sas
365 rue du Lieutenant Putier • 71530 Virey-Le-Grand • France
Tel. +33 03 85 97 42 00 • Fax +33 03 85 97 42 42
contact@wattswater.com • www.socla.com